

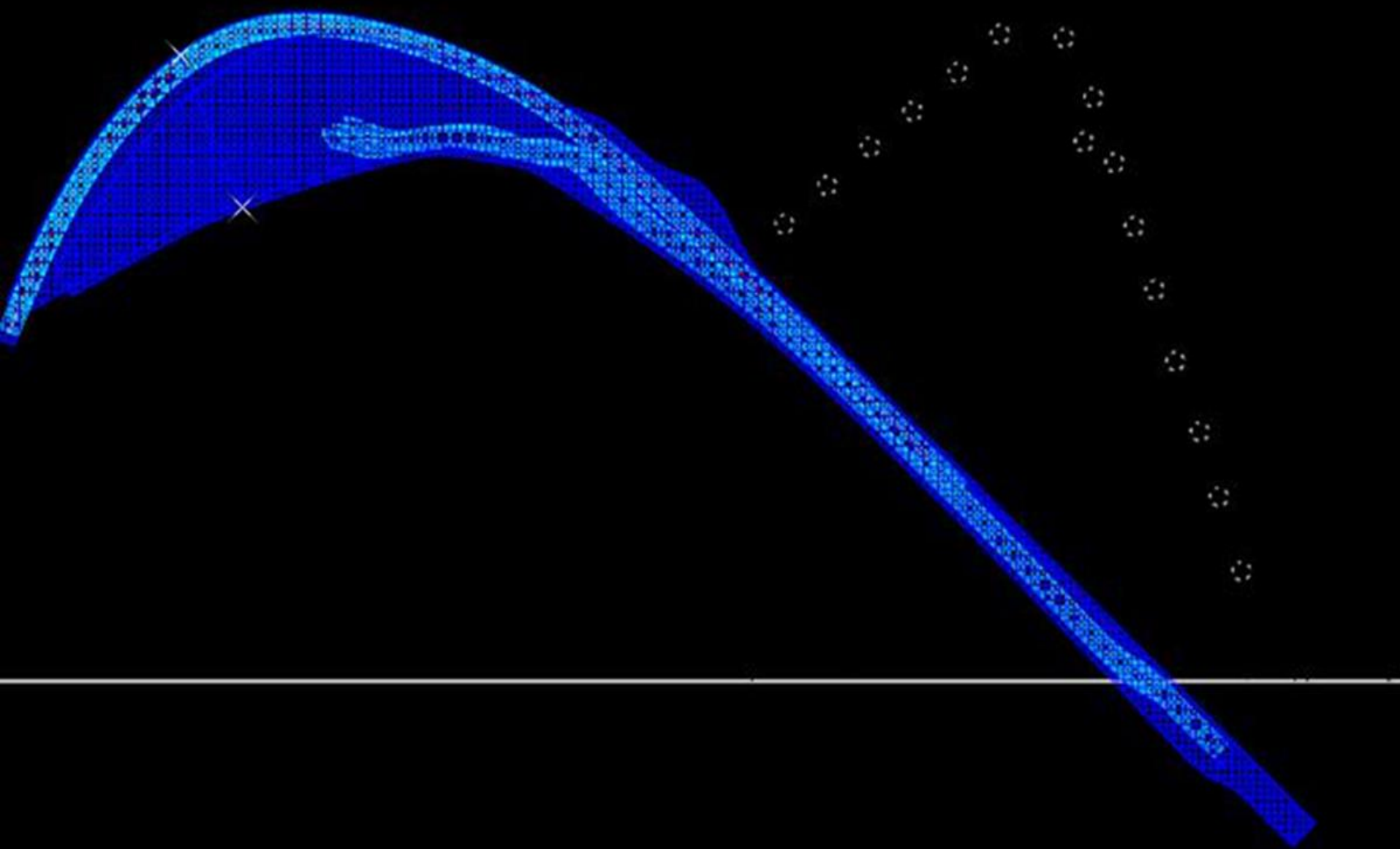


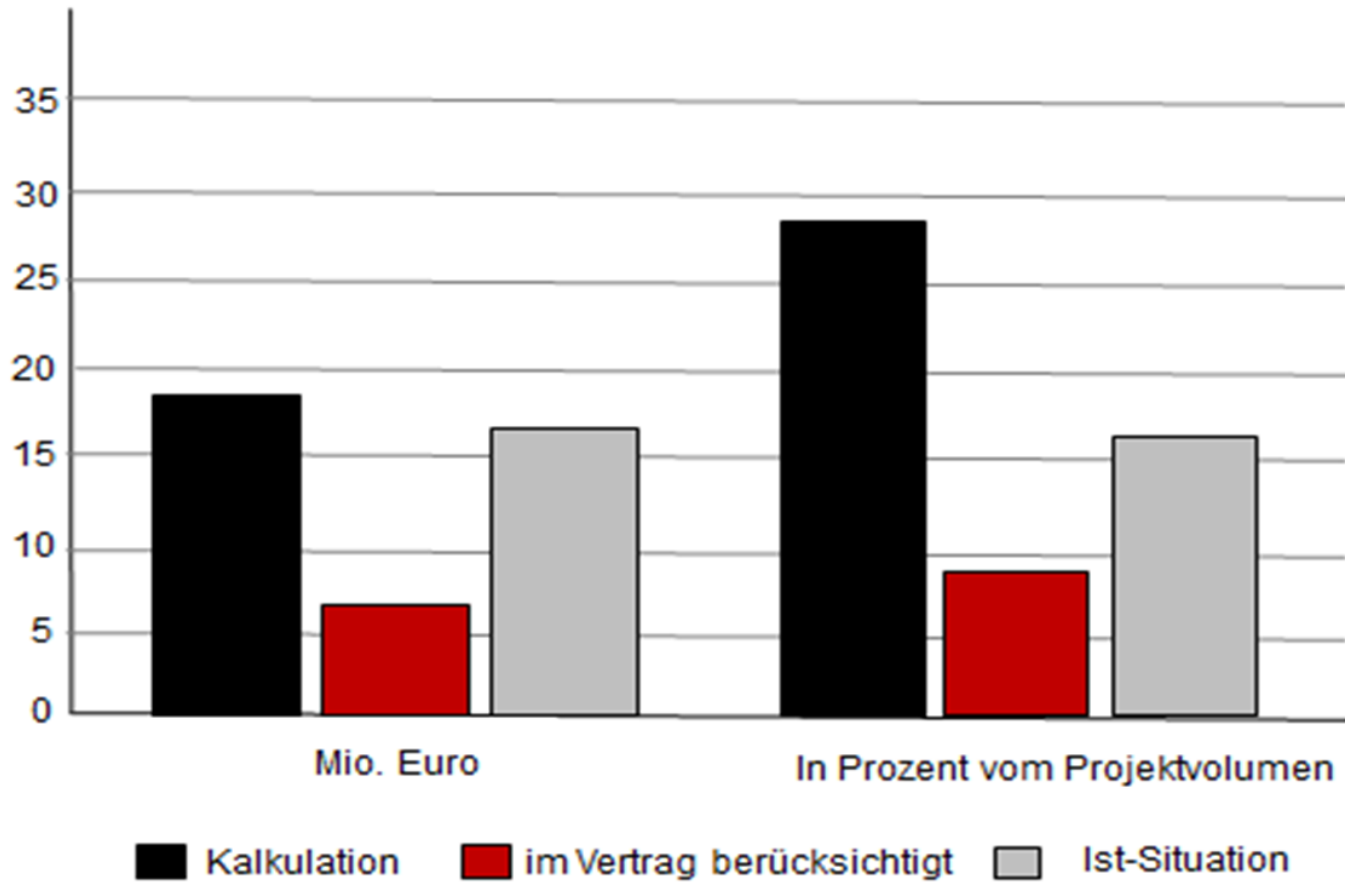
Advanced Logistics Business

LSA Logistik Service Agentur

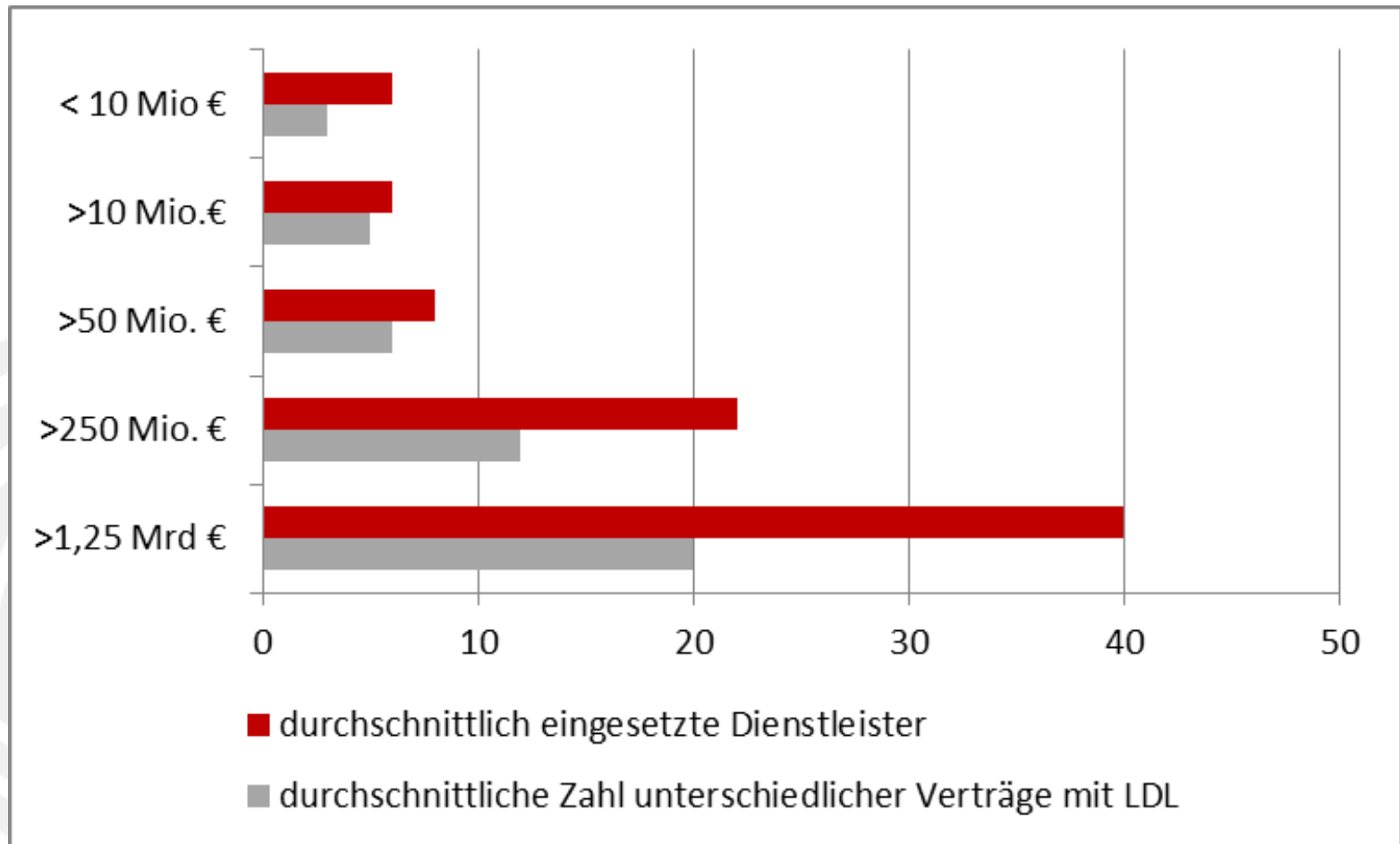
Advanced Logistics Business.

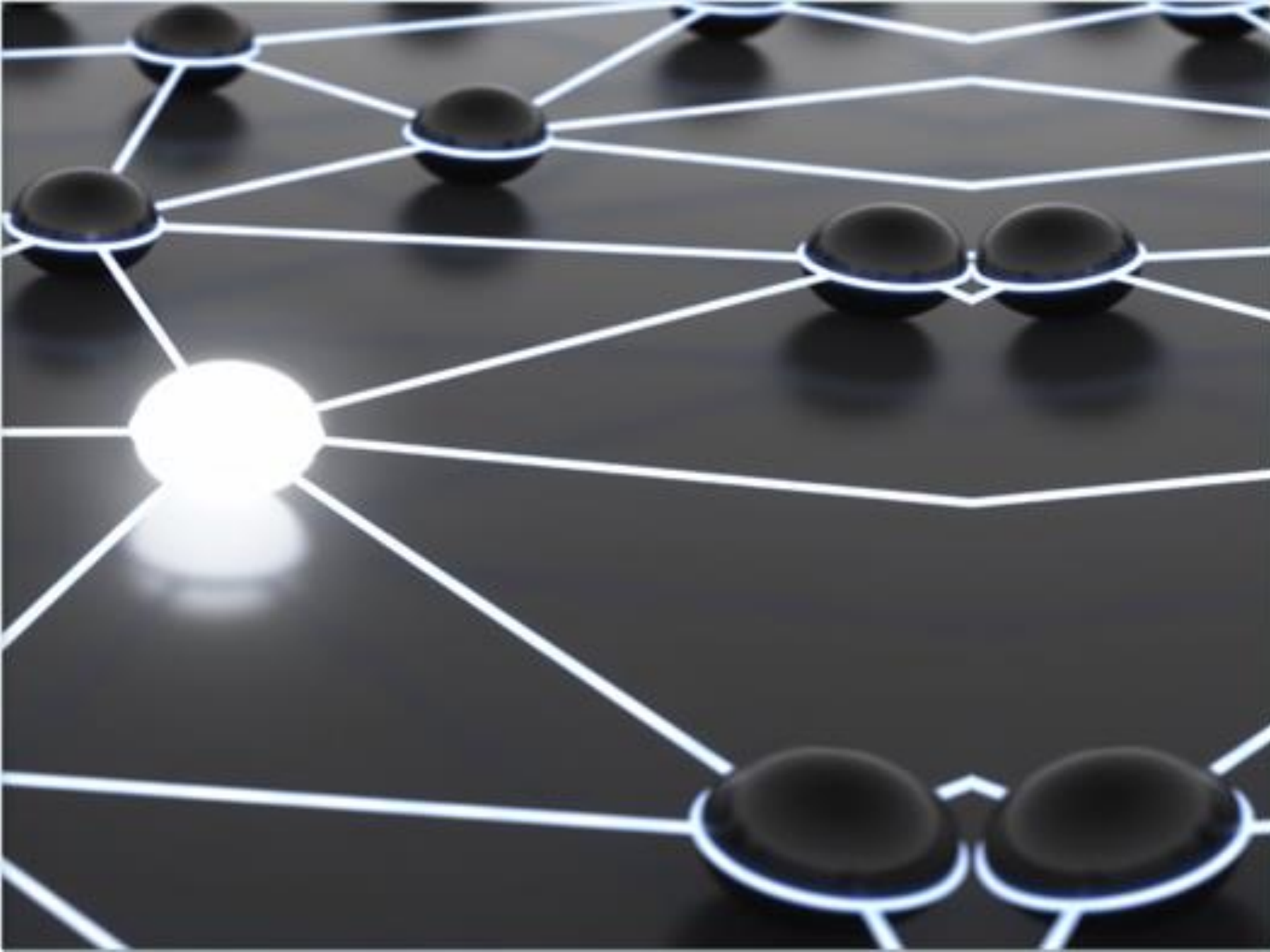
smart. united.











1. *Transport aus der Fertigung ins Lager (Fläche 1)*

2. *Transport aus dem Lager zur Kaje (Fläche 2)*

3. Umschlag von Kaje auf Ponton/Schiff

4. Wassertransport zum Hafenterminal

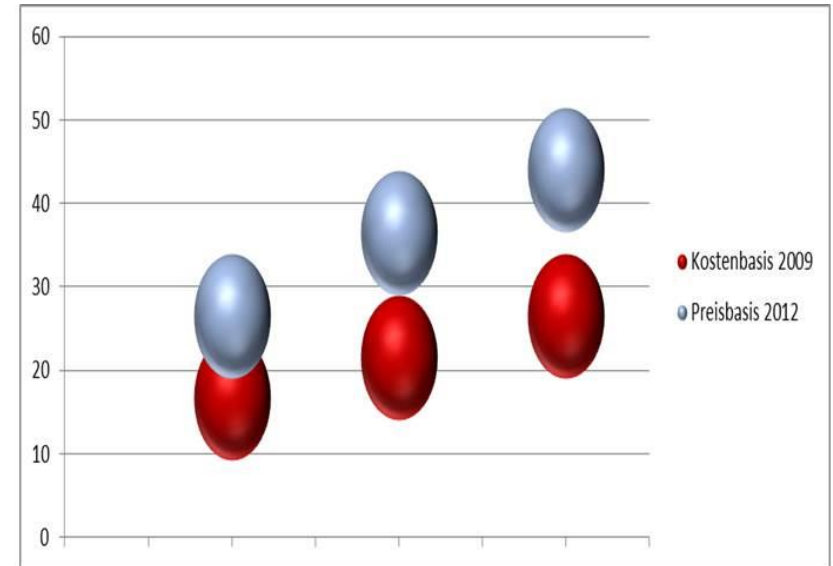
5. Umschlag von Ponton/Schiff auf Kaje im Hafen

6. Transport ins Lager im Hafenterminal (Fläche 3)

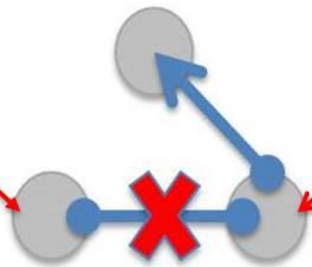
7. Transport aus dem Lager zur Kaikante (Fläche 4)

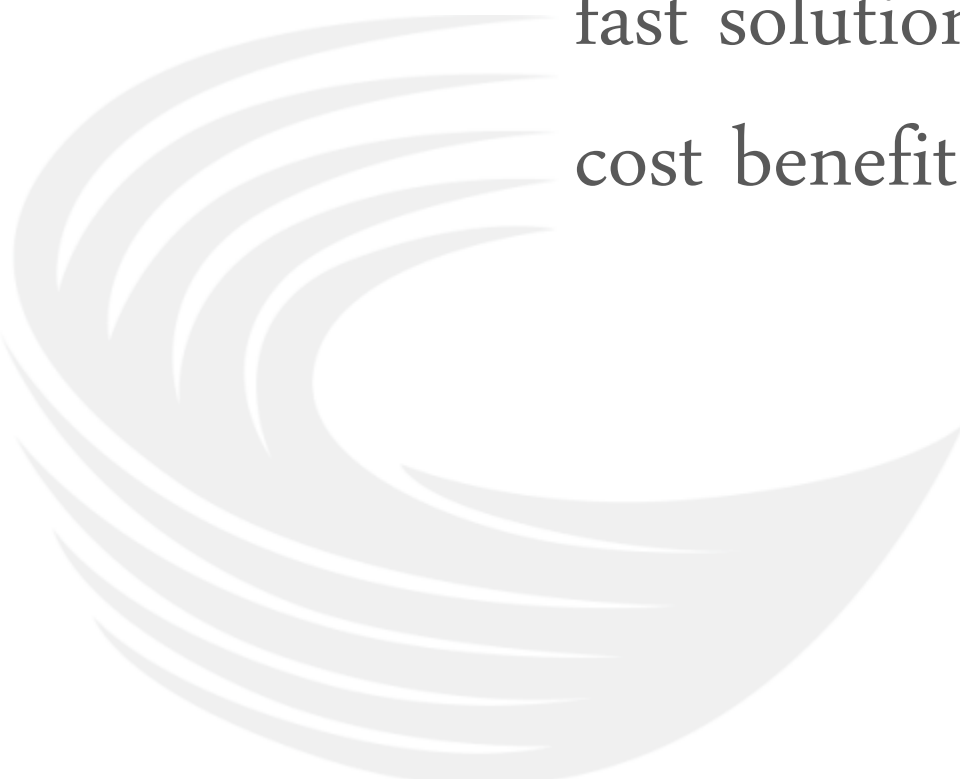
8. *Umschlag auf das Installations Schiff*

9. *Transport und Installation auf See*



Kostengrößen in Mio. € im Vergleich optimistisch, realistisch pessimistisch:
Transport von Komponenten eines Windparks in einen anderen Hafen



A large, light grey graphic on the left side of the slide, composed of several curved, overlapping lines that sweep from the bottom left towards the top right, mirroring the style of the LSA logo.

fast solutions and a
cost benefit ratio (R.O.I)

LSA 4 PL Logistics Management